

ALABAMA

Calera Quarry
Vulcan Construction Materials, LLC,
Shelby
Crushed, Broken Limestone NEC

Dolcito Quarry
Vulcan Construction Materials, LLC,
Jefferson Crushed, Broken Limestone
NEC

Huntsville North Quarry
Vulcan Construction Materials, LLC
Madison
Crushed, Broken Limestone NEC

Jackson Plant 713
Couch Aggregates, LLC, Clarke
Construction Sand and Gravel

Meadows
Ferroglobe, Lowndes
Construction Sand and Gravel

Mims Pit
Alabama Aggregate, Inc, Autauga
Construction Sand and Gravel

Notasulga Quarry
Vulcan Construction Materials, LLC, Lee
Crushed, Broken Granite

P & R Mining
P & R LLC, Escambia
Construction Sand and Gravel

Wade Sand & Gravel Co., Inc.
Wade Sand & Gravel Co., Inc, Jefferson
Crushed, Broken Limestone NEC

Wadley Crushed Stone
Wadley Crushed Stone LLC, Randolph
Crushed, Broken Granite

Benton Co Stone Inc
James A Kemp; Melinda S Kemp
Benton
Crushed, Broken Limestone NEC

Bradley Contracting Inc
Randy L Bradley, Independence
Crushed, Broken Limestone NEC

Granite Mountain Quarry #1
Haskell L Dickinson II, Pulaski
Crushed, Broken Granite

Granite Mountain Quarry #2
Haskell L Dickinson II, Pulaski
Crushed, Broken Granite

Hatton Quarry
Martin Marietta Materials Inc, Polk
Crushed, Broken Limestone NEC

Jones Mill Quarry
Martin Marietta Materials Inc, Hot Spring

Crushed, Broken Traprock

Midway Quarry Plant
William Schwartz, Logan
Crushed, Broken Sandstone

Sharps Quarry & Plant
CRH PLC, Benton
Crushed, Broken Limestone NEC

South New Hope Quarry & Plant
Ronald Duffield, Pope
Crushed, Broken Sandstone

Springdale Quarry
Northwest Arkansas Quarries LLC;
Rogers Group Inc, Washington
Crushed, Broken Limestone NEC

ALASKA

Aggregate Products
Colas S A, Anchorage Municipality
Construction Sand and Gravel

Browns Hill Quarry - Stationary Pit
Calista Corporation
Fairbanks North Star Borough
Crushed, Broken Stone, NEC

Cape Lisburne
Orion Marine Group Inc
North Slope Borough
Crushed, Broken Stone NEC

F S & G Aggregate Inc
Charlie Chausse
Fairbanks North Star Borough
Construction Sand and Gravel

Klatt Terminal
MDU Resources Group Inc
Anchorage Municipality
Construction Sand and Gravel

Moosehorn Quarry
David L Mallars
Anchorage Municipality
Construction Sand and Gravel

Palmer Loading Station
MDU Resources Group Inc
Matanuska-Susitna Borough
Construction Sand and Gravel

Site 4 North Eagle River Gravel Pit
Eklutna Incorporated
Anchorage Municipality
Crushed, Broken Stone NEC

South Crusher #3
Colas S A, Haines Borough
Construction Sand and Gravel

Ugadaga Quarry

Archie Stepp; Glenn R Olson
Aleutians West Census Area
Construction Sand and Gravel

ARIZONA

Cemex - 19th Ave
Cemex S A, Maricopa
Construction Sand and Gravel

Dobson Plant
Salt River Pima-Maricopa Indian
Community Maricopa
Construction Sand and Gravel

Estrella North Plant
C William Nichols, Maricopa
Crushed, Broken Stone NEC

Madison Granite Pit
Stanley Novak, Maricopa
Crushed, Broken Granite

Maricopa Pit
Gila River Indian Community Pinal
Construction Sand and Gravel

Mills
Carl M Gray, Coconino
Crushed, Broken Sandstone

Queen Creek #1
Chris J Reinesch; Steve J Hood, Pinal
Construction Sand and Gravel

Santan Pit
Gila River Indian Community, Pinal
Construction Sand and Gravel

West Broadway
Vulcan Materials Company, Maricopa
Construction Sand and Gravel

West Plant
Vulcan Materials Company, Maricopa
Construction Sand and Gravel

CALIFORNIA

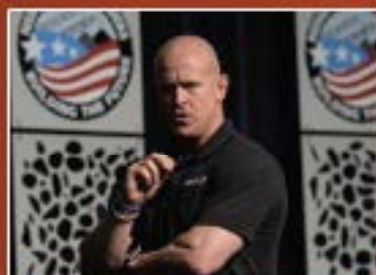
3M
Frank Smith, Riverside
Construction Sand and Gravel

3M Corona Plant
Minnesota Mining & Manufacturing
Company Riverside
Crushed, Broken Stone NEC

A R Wilson Quarry
Thomas H Squeri, Santa Cruz
Crushed, Broken Granite

Blue Mountain Minerals
Portola Minerals Company, Tuolumne
Crushed, Broken Limestone NEC

SEMCO Publishing Supports NSSGA, Sponsors Young Leaders



SEMCO Publishing is once again supporting the National Stone, Sand & Gravel Association (NSSGA) as a sponsor of the association's Young Leaders group.

Rock Products and *North American Mining* magazines will sponsor the Young Leaders luncheon at NSSGA's 2022 Annual Convention in Nashville; and *Rock Products* will sponsor the Mark S. Walsh Award at the Young Leaders 2022 Annual Meeting in La Jolla, Calif.

The Young Leaders is a group of aggregates professionals, age 40 and under, who are committed to growing in their professional development and establishing a strong network within the industry. Part of what makes NSSGA's Young Leaders so unique and valuable to its participants is the diversity of experiences within the group.

Its industry luncheon, which takes place each year except in years when ConExpo-Con/Agg is held, features a motivational speaker. Previous speakers have included Mike Saraille from Echelon Front, former Navy SEAL David Sears and Dave Turin, star of the Discovery GO TV series "Dave Turin's Lost Mine."

Mark S. Walsh was an energetic and enthusiastic supporter of the Young Leaders' mission, purpose and activities. He passed away in 1999 at 37 years old. In memory of Mark's leadership and commitment, Young Leaders established the Mark S. Walsh Annual Leadership Award to be given to an individual that exemplifies the ideals by which he led his life: quality, honesty and integrity.

"We believe in the future of the aggregates industry, and that is the Young Leaders," said Mark S. Kuhar, editor of *Rock Products*. "Innovation, advances in technology and an understanding of the industry's important place in society will all be driven by the men and women who make up this important demographic. We are proud to support their efforts."

ROCK PRODUCTS NORTH AMERICAN **MINING** **NSSGA**
NATIONAL STONE, SAND & GRAVEL ASSOCIATION



2022

Chandler Aggregates-Sierra Plant

Eric Werner; Pat Broyles, Riverside
Construction Sand and Gravel

Irwindale Rock Plant

HeidelbergCement AG, Los Angeles
Construction Sand and Gravel

Lucerne Valley Plant and Quarry

Minerals Technologies Inc, San Bernardino
Crushed, Broken Limestone NEC

Maricopa Plant

Nestle S A, Kern
Crushed, Broken Stone NEC

Omya California

Omya Industries Inc, San Bernardino
Crushed, Broken Limestone NEC

Vernalis Plant

Teichert Inc, San Joaquin
Construction Sand and Gravel

COLORADO

115 WP

Garrett Varra; Pasquale Varra, Weld
Construction Sand and Gravel

117 WP

Garrett Varra; Pasquale Varra, Weld
Construction Sand and Gravel

Menzer Quarry

Edward C Levy Jr, El Paso
Crushed, Broken Stone NEC

Morrison Plant

LafargeHolcim Ltd, Jefferson
Crushed, Broken Granite

Morton Lakes

James C Marvel Jr, Weld
Construction Sand and Gravel

Parkdale Quarry

Martin Marietta Materials Inc, Fremont
Construction Sand and Gravel

Riverbend Pit

Martin Marietta Materials Inc, Weld
Construction Sand and Gravel

Specification Aggregates

Martin Marietta Materials Inc, Jefferson
Crushed, Broken Sandstone

Walstrum Mine

Albert R Frei, Clear Creek
Crushed, Broken Granite

West Farm Pit-Dry Screen Operation

Powers Holding Company, LLC, Powers
Construction Sand and Gravel

CONNECTICUT

Galasso Materials LLC

Peter K Tully, Hartford
Crushed, Broken Traprock

New Britain Quarry

CRH PLC, Hartford
Crushed, Broken Traprock

New Milford Plant

O & G Industries Inc, Litchfield
Crushed, Broken Stone NEC

North Branford Quarry

CRH PLC, New Haven
Crushed, Broken Traprock

Quarry No 2 Southbury

O & G Industries Inc, Litchfield
Crushed, Broken Limestone NEC

Rawson Materials - Plant 5

O & G Industries Inc, Windham
Construction Sand and Gravel

Tilcon Newington Quarry

CRH PLC, Hartford
Crushed, Broken Traprock

Wallingford Quarry

CRH PLC, Middlesex
Crushed, Broken Traprock

Windham Materials LLC

Elmo Aiudi, Windham
Construction Sand and Gravel

York Hill Mine & Mill

Leonardo H Suzio, New Haven
Crushed, Broken Traprock

DELAWARE

Bay Road Plant #7

CRH PLC, Kent
Construction Sand and Gravel

Diamond Materials, LLC

Richard E Pierson Jr; Michael K Pierson,
Kent

Construction Sand and Gravel

M L Joseph Sand & Gravel Company Inc

Kenneth P Adams; Jo Ann Adams,
Sussex

Construction Sand and Gravel

Sussex Sand & Gravel

Chaney Enterprises LP, Sussex
Construction Sand and Gravel

Tarburton Pit

CRH PLC, Kent
Construction Sand and Gravel

FLORIDA

CYD A-Mining

Conrad Yelvington Distributors, Taylor
Crushed, Broken Limestone NEC

FEC Quarry

CEMEX Construction Materials Florida,
LLC Miami-Dade

Crushed, Broken Limestone NEC

Fort Myers Mine

Florida Rock Industries Inc, Lee
Crushed, Broken Limestone NEC

Golden Gate Quarry

Conrad Yelvington Distributors, Collier
Crushed, Broken Limestone NEC

Krome Quarry

CEMEX Construction Materials Florida, LLC
Miami-Dade

Crushed, Broken Limestone NEC

Miami Quarry

Florida Rock Industries Inc, Miami-Dade
Crushed, Broken Limestone NEC

Palm Beach Aggregates LLC

Palm Beach Aggregates LLC, Palm Beach
Crushed, Broken Limestone NEC

Pennsuco Quarry

Titan Florida LLC, Miami-Dade
Crushed, Broken Limestone NEC

White Rock Quarries

White Rock Quarries, Miami-Dade
Crushed, Broken Limestone NEC

Youngquist Brothers Rock Inc.

Youngquist Brothers Rock Inc., Lee
Crushed, Broken Limestone NEC

GEORGIA

Augusta Quarry

Martin Marietta Materials, Inc., Columbia
Crushed, Broken Granite

Cumming Mine Site

Bluegrass Materials Company, LLC,
Forsyth

Crushed, Broken Stone NEC

Heath Quarry

Junction City Mining Company, L.L.C.,
Talbot

Crushed, Broken Granite

Kennesaw Quarry

Vulcan Construction Materials, LLC, Cobb
Crushed, Broken Granite

Luck Stone Atlanta Stephens Plant

Stephens Industries, LLC, Clayton
Crushed, Broken Stone NEC



904-356-6840

sales@schurcoslurry.com



The Most Trusted Slurry Pump & Spare Parts On the Market



- ✓ **HEAVY-DUTY**
- ✓ **TRUSTED**
- ✓ **LONG LASTING**
- ✓ **VERSATILE**

PUMPS FOR

- **CYCLONE FEED**
- **FINES RECOVERY**
- **EFFLUENT TRANSFER**

Macon Quarry

Vulcan Construction Materials, LLC
Monroe
Crushed, Broken Granite

Norcross Quarry

Vulcan Construction Materials, LLC
Gwinnett
Crushed, Broken Granite

Postell Quarry

Vulcan Construction Materials, LLC
Jones
Crushed, Broken Granite

Ruby Quarry

Martin Marietta Materials, Inc., Jones
Crushed, Broken Granite

Warren County Quarry

Midsouth Aggregates, Warren
Crushed, Broken Granite

HAWAII

Bluestone Quarry & Mill

James W Glover Holding Company Ltd,
Kauai

Crushed, Broken Traprock

Halawa Valley

MDU Resources Group Inc, Honolulu
Crushed, Broken Stone NEC

Hilo Crusher

James W Glover Holding Company Ltd,
Hawaii

Crushed, Broken Traprock

Kapaa Quarry And Mill

Pohaku Paa LLC, Honolulu
Crushed, Broken Traprock

Kauai Aggregates

O Thronas Incorporated, Kauai
Crushed, Broken Stone NEC

Keaaau Quarry

Russell Kuwaye, Hawaii
Crushed, Broken Stone NEC

Portable Plant

Lawrence E Wilderman, Honolulu
Construction Sand and Gravel

Puunene Camp 10 Quarry

Pohaku Paa LLC, Maui
Crushed, Broken Traprock

Puunene Quarry

MDU Resources Group Inc, Maui
Crushed, Broken Stone NEC

Yamada And Sons, Inc.

Yamada Diversified Corp, Hawaii
Crushed, Broken Stone NEC

IDAHO

Crusher #1

MDU Resources Group Inc, Ada
Construction Sand and Gravel

Crusher #2

MDU Resources Group Inc, Valley
Construction Sand and Gravel

Crushing Plant #6

Eucon Corp, Nez Perce
Construction Sand and Gravel

Freeman Pit

Jon McCreary, Kootenai
Construction Sand and Gravel

Plant #1

Eucon Corp, Nez Perce
Construction Sand and Gravel

Plant #2

Eucon Corp, Nez Perce
Construction Sand and Gravel

Plant #5

Eucon Corp, Nez Perce
Construction Sand and Gravel

Plant #4

Eucon Corp, Nez Perce
Construction Sand and Gravel

Treasure Canyon Mill #2

Stacie S Steadman, Franklin
Crushed, Broken Limestone NEC

Wash Plant

MDU Resources Group Inc, Canyon
Construction Sand and Gravel

ILLINOIS

Bartlett Underground Quarry

Vulcan Construction Materials, LLC, Cook
Crushed, Broken Limestone NEC

Bluff City Minerals

Bluff City Minerals LLC, Madison
Crushed, Broken Limestone NEC

Conco Western Stone

Lafarge Aggregates Illinois, Inc, Kane
Crushed, Broken Limestone NEC

Federal Underground

Hanson Material Service, Cook
Crushed, Broken Limestone NEC

Hastie Mine

Hastie Mining, Hardin
Crushed, Broken Limestone NEC

JS & G Underground Mine # 1

Lafarge Aggregates Illinois, Inc, Will
Crushed, Broken Limestone NEC

McCook Quarry

Vulcan Construction Materials, LLC,
Cook

Crushed, Broken Limestone NEC

Romeo Quarry

Hanson Material Service, Will
Crushed, Broken Limestone NEC

The R S & D Mine

Lafarge Aggregates Illinois, Inc., Kane
Crushed, Broken Limestone NEC

Thornton Quarry

Hanson Material Service, Cook
Crushed, Broken Limestone NEC

INDIANA

Ardmore Stone Quarry

Hanson Aggregates Midwest, LLC, Allen
Crushed, Broken Limestone NEC

Bloomington Quarry

Rogers Group Inc, Monroe
Crushed, Broken Limestone NEC

Cape Sandy #1

Mulzer Crushed Stone Inc, Crawford
Crushed, Broken Limestone NEC

Cape Sandy #2

Mulzer Crushed Stone Inc, Meade
Crushed, Broken Limestone NEC

Harding Street Quarry - Surface

Hanson Aggregates Midwest, LLC,
Marion

Crushed, Broken Limestone NEC

Kentner Creek Underground

West Plains Mining, LLC, Wabash
Crushed, Broken Limestone NEC

Kentucky Avenue Mine

Martin Marietta Materials Inc, Marion
Crushed, Broken Limestone NEC

New Amsterdam Quarry

Mulzer Crushed Stone Inc, Meade
Crushed, Broken Limestone NEC

Noblesville Stone

Martin Marietta Materials Inc, Hamilton
Crushed, Broken Limestone NEC

North Indianapolis Quarry & Mill

Martin Marietta Materials Inc, Hamilton
Crushed, Broken Limestone NEC

IOWA

Alden Plant

Frank Goode, Hardin
Crushed, Broken Limestone NEC

Ames Mine

Martin Marietta Materials Inc, Story

A WIRTGEN GROUP COMPANY



KLEEMANN

STRONG LIKE A SPECIALIST. VERSATILE LIKE AN ALL-ROUNDER.

MOBIREX MR 110/130 EVO2



**MOBIREX
EVO2**

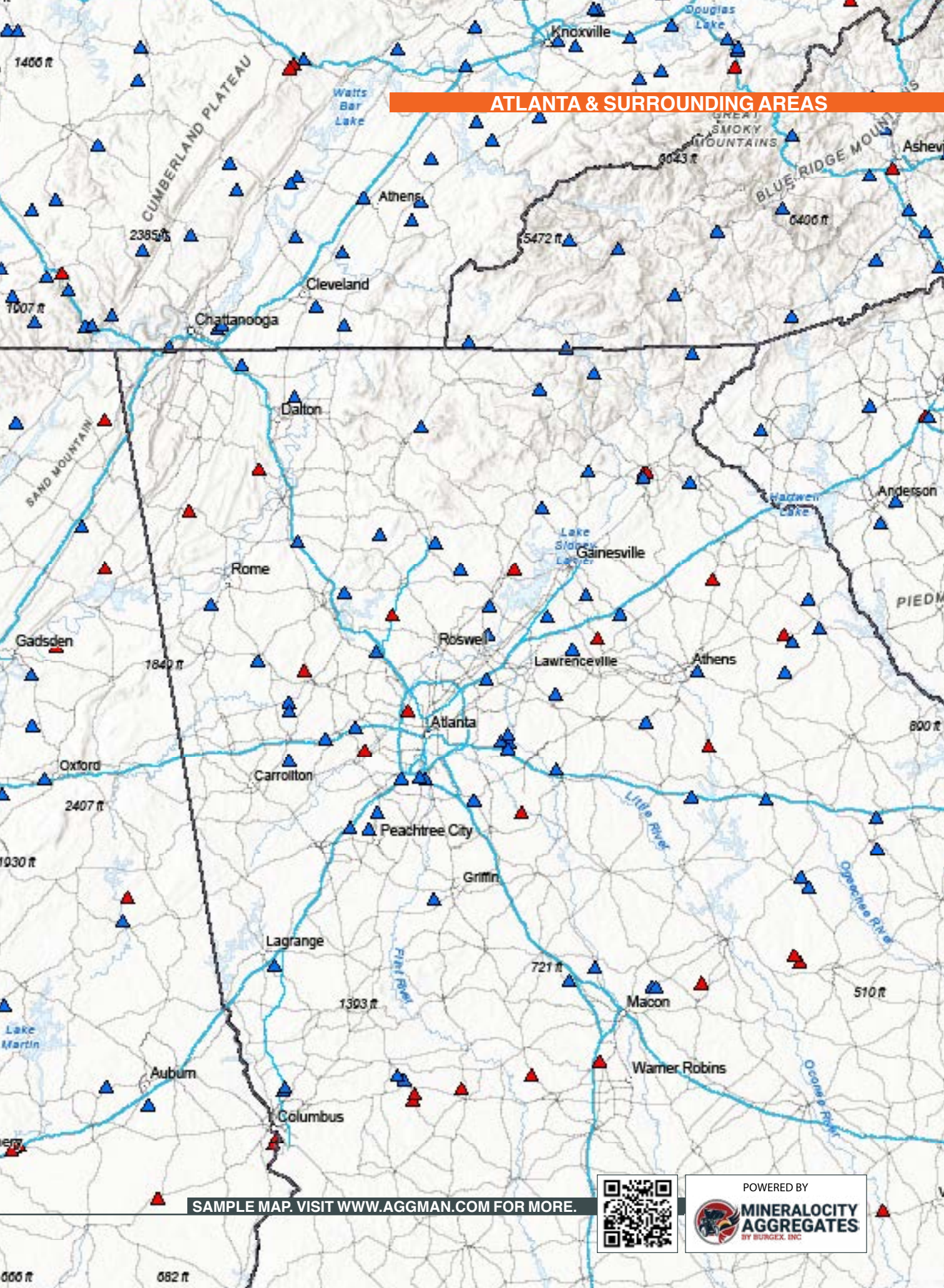
MOBIREX MR 110/130 EVO2

PERFECT FOR HIGH THROUGHPUT PERFORMANCE - IN NATURAL STONE AND FOR RECYCLING APPLICATIONS. The MOBIREX MR 110/130 EVO2 mobile impact crushers feature a state-of-the-art material flow concept and a powerful diesel-directdrive - for high throughput combined with optimised wear and consumption. With their compact design, the plants are easy to transport and as quick to set up as they are to dismantle. The MR 110/130 EVO2 - versatile and ready for high performance.



www.wirtgen-group.com

ATLANTA & SURROUNDING AREAS



SAMPLE MAP. VISIT WWW.AGGMAN.COM FOR MORE.



YOUR **TSUBAKI** SIDEKICK FOR RELIABLE CONVEYOR CHAIN PERFORMANCE.



To minimize the risk of costly downtime, having the right parts is just the start. For reliable and predictable performance, you need a trusted, mechanical sidekick. U.S. Tsubaki's ProService Lifecycle Support offers a unique portfolio of proactive field services to help assist your maintenance teams and keep your operations running at their best. From chain and sprocket system optimization to installation support, training and dynamic maintenance planning, U.S. Tsubaki's leading the movement.

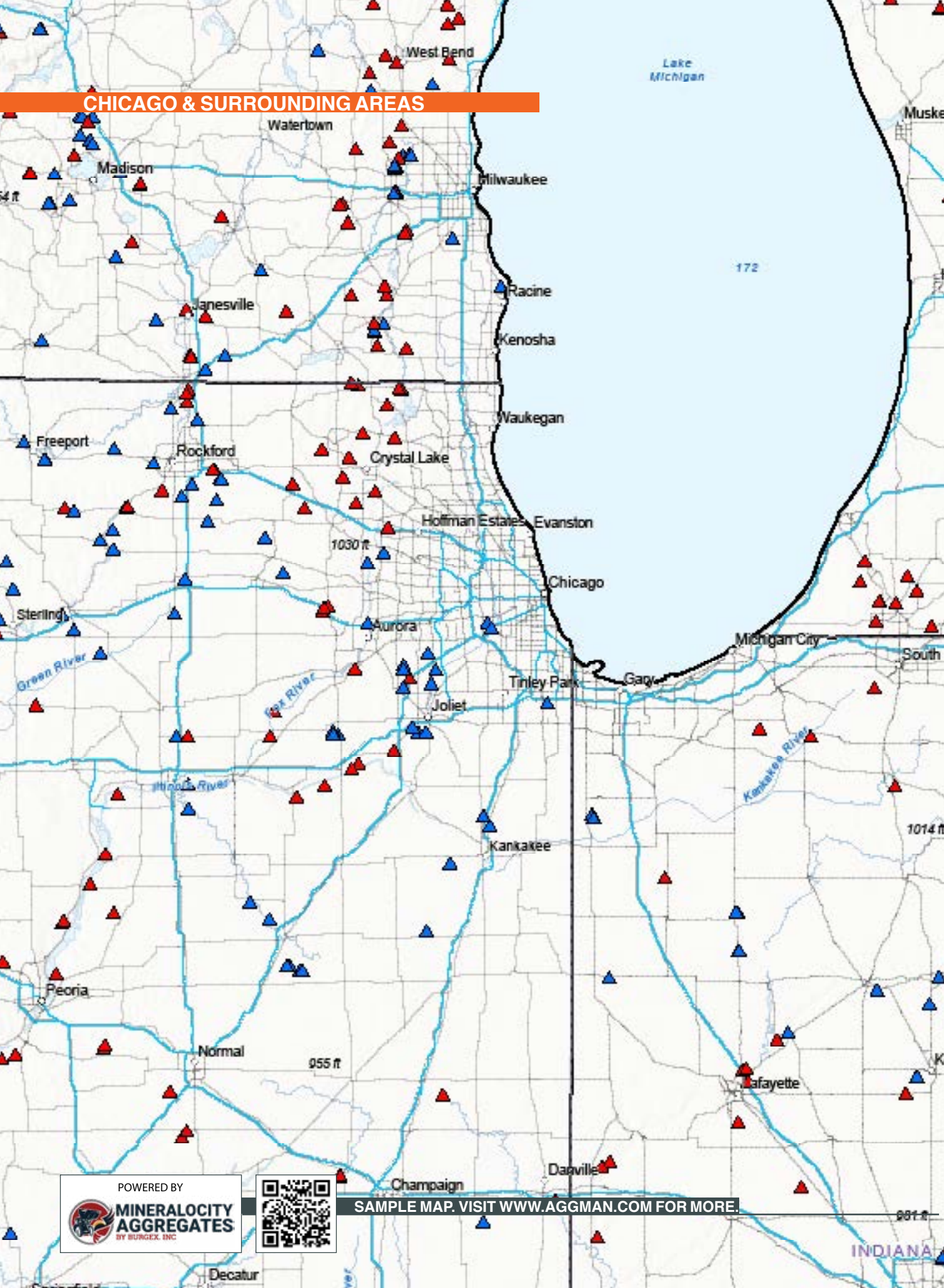


Want us to optimize your operations?
That's what we do. Call us today to schedule
an on-site visit 800-323-7780

©2019 U.S. Tsubaki Power Transmission, LLC. All Rights Reserved.

TSUBAKI
LEADING THE MOVEMENT

CHICAGO & SURROUNDING AREAS



POWERED BY



**MINERALCITY
AGGREGATES**
BY SURGEX, INC.



SAMPLE MAP. VISIT WWW.AGGMAN.COM FOR MORE.

981 ft

INDIANA

ROCK
PRODUCTS[®]

COMING SOON!

The Entirely New, Online Aggregates Atlas

Launching May, 2022

The Aggregates Atlas has served the industry for more than 20 years, but we believed there was an opportunity to deliver a better product to the aggregates community. In May, we will release our entirely re-imagined version of Rock Products' Aggregates Atlas, powered by Burgex' new Mineralogy Aggregates Platform. The all-new Aggregates Atlas will provide the industry with dynamic, easy to use, forward-looking tools for decision-making.

SPONSORED BY



POWERED BY



Crushed, Broken Limestone NEC
 Calcium Products Plant
 Calcium Holdings Inc, Pocahontas
 Crushed, Broken Limestone NEC
 Conklin Quarry and Mill
 Thomas R Scott, Johnson
 Crushed, Broken Limestone NEC
 Durham Mine & Mill
 Martin Marietta Materials Inc, Marion
 Crushed, Broken Limestone NEC
 Fort Dodge Mine
 Martin Marietta Materials Inc, Webster
 Crushed, Broken Limestone NEC
 Lee Crawford QY CO
 Steven R Powell, Linn
 Crushed, Broken Limestone NEC
 Linwood Mine
 McCarthy-Bush Corp, Scott
 Crushed, Broken Limestone NEC
 Moore Quarry
 Martin Marietta Materials Inc,
 Pocahontas
 Crushed, Broken Limestone NEC
 Skyline Construction Mine #1
 Greg Bruening, Marion
 Crushed, Broken Limestone NEC

KANSAS

Big Spring Quarry
 Eric H Bettis; Matt McPherson, Douglas
 Crushed, Broken Limestone NEC
 Johnson County Aggregates
 CRH PLC, Johnson
 Crushed, Broken Limestone NEC
 Kaw Valley Dry Plant #2
 Ben G Kates, Johnson
 Construction Sand and Gravel
 Olathe Quarry
 Summit Materials LLC, Johnson
 Crushed, Broken Limestone NEC
 Plant #3
 Bayer Construction Company Inc, Clay
 Crushed, Broken Limestone NEC
 Plant #80002
 Summit Materials LLC, Jefferson
 Crushed, Broken Limestone NEC
 Plant #80012
 Summit Materials LLC, Jefferson
 Crushed, Broken Limestone NEC
 Quartzite Quarry
 CRH PLC, Lincoln
 Crushed, Broken Stone NEC

Shawnee-Plant #2
 CRH PLC, Johnson
 Construction Sand and Gravel
 Sunflower Quarry
 Martin Marietta Materials Inc, Johnson
 Crushed, Broken Limestone NEC

KENTUCKY

Battletown Quarry
 Haydon Materials Battletown, LLC,
 Meade
 Crushed, Broken Limestone NEC
 Big Bend Quarry
 Hilltop Big Bend Quarry LLC, Harrison
 Crushed, Broken Limestone NEC
 Bullitt County Stone Company
 Rogers Group Inc., Bullitt
 Crushed, Broken Limestone NEC
 Cumberland River Quarry
 Pine Bluff Sand & Gravel Company,
 Livingston
 Crushed, Broken Limestone NEC
 Grand Rivers Quarry
 Vulcan Construction Materials, LLC,
 Livingston
 Crushed, Broken Limestone NEC
 Grayson County Quarry
 Scotty's Contracting & Stone, LLC,
 Grayson
 Crushed, Broken Limestone NEC
 Jefferson County Stone
 Rogers Group Inc, Jefferson
 Crushed, Broken Limestone NEC
 Riverside Stone Mine
 Yager Materials LLC, Meade
 Crushed, Broken Limestone NEC
 Three Rivers Quarry
 Lafarge Aggregates Illinois, Inc.,
 Livingston
 Crushed, Broken Limestone NEC
 Warren Paving Slats Lucas Quarry
 Warren Paving Inc, Livingston
 Crushed, Broken Limestone NEC

LOUISIANA

Honey Island Operations
 Lafarge Aggregates Illinois, Inc.
 St. Tammany Parish
 Construction Sand and Gravel
 Indian Village Plant 1284
 Arcosa Aggregates, Inc., Jefferson
 Davis Parish
 Construction Sand and Gravel
 Jenkins Pit
 Aggregate Industries, St. Helena Parish
 Construction Sand and Gravel

Knight Pit
 Brownstone Sand and Gravel Inc
 Washington Parish
 Construction Sand and Gravel
 Larry Grayson & Son Trucking, LLC
 Larry Grayson & Son Trucking LLC
 Rapides Parish
 Construction Sand and Gravel
 Pearl River Plant 1725
 Arcosa Aggregates, Inc, St. Tammany
 Parish
 Construction Sand and Gravel
 Plant 1
 Superior Sand and Gravel
 East Feliciana Parish
 Construction Sand and Gravel
 Plant 1
 Regional Sand and Gravel, LLC
 East Feliciana Parish
 Sand, Common
 Plant 10 - Easterly
 Southern Aggregates of Delaware, LLC
 Livingston Parish
 Construction Sand and Gravel
 Plant 14 - Amite West
 Southern Aggregates of Delaware, LLC
 Tangipahoa Parish
 Construction Sand and Gravel

MAINE

Bowdoin Quarry
 Peter Labbe, Sagadahoc
 Crushed, Broken Stone NEC
 C636-Sidney Crushing Facility
 CRH PLC, Kennebec
 Crushed, Broken Limestone NEC
 Carroll Materials, LLC.
 All States Materials Group, York
 Construction Sand and Gravel
 Christian Hill Quarry
 Joel Cummings; Rodney A Cummings;
 Lori A Gile, Androscoggin
 Construction Sand and Gravel
 Dayton Pit & Mill
 Russell E Keene, York
 Construction Sand and Gravel
 North Jay White
 Groupe Polycor Inc, Franklin
 Construction Sand and Gravel
 Pike Industries
 CRH PLC, York
 Construction Sand and Gravel



Our Mineralogy Aggregates Platform is Bringing You a Data Revolution



From the boardroom to the pit, we will show you how pioneering data analysis can change the way you do business.

The new Mineralogy Aggregates platform will generate weeks or even months' worth of actionable mineral market analysis research within hours. Using advanced data analysis and unprecedented demand-growth projections, our platform helps you operate smarter and more efficiently. With more than a decade of providing comprehensive consulting services for prospectors and project generators on more than 2,500+ projects, BURGEX has a proven track record of success.

www.burgex.com

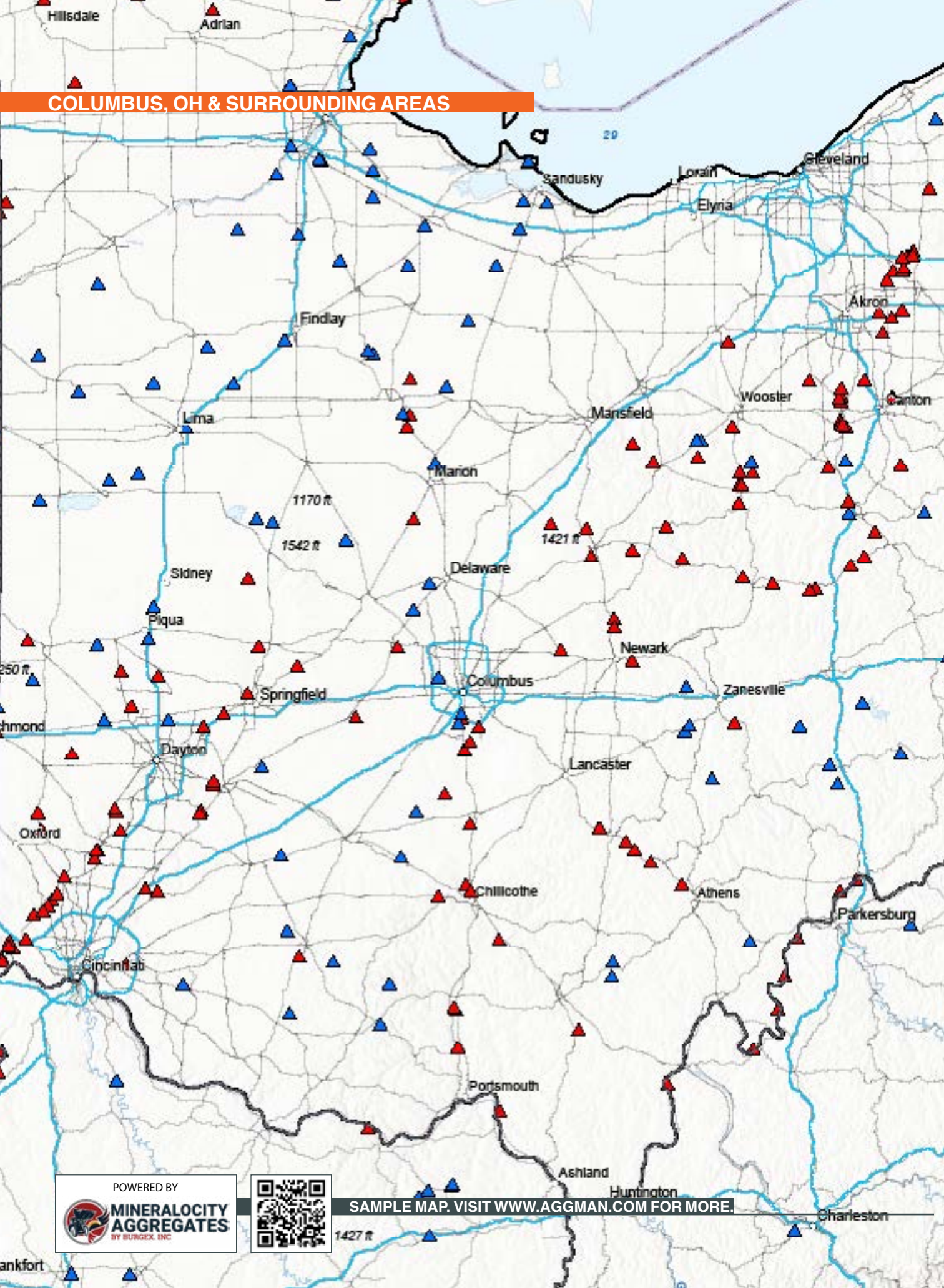
+1 (775) 335-2053

info@burgex.com



**MINERALOGY
AGGREGATES**
BY BURGEX, INC

COLUMBUS, OH & SURROUNDING AREAS



POWERED BY



SAMPLE MAP. VISIT WWW.AGGMAN.COM FOR MORE.

1427 ft

Poland Crushed Stone C610

CRH PLC, Androscoggin
Construction Sand and Gravel

Topsham Pit & Mill

Thomas C Sturgeon, Cumberland
Crushed, Broken Granite

Wells Quarry C624

CRH PLC, York
Crushed, Broken Granite

MARYLAND

Baltimore South Mine

Imerys S A, Baltimore
Crushed, Broken Limestone NEC

Belvedere Plant

Robert H Stewart, Cecil
Construction Sand and Gravel

Elk Mills Quarry

A Ross Myers, Cecil
Crushed, Broken Granite

Frederick Quarry

Vulcan Materials Company, Frederick
Crushed, Broken Limestone NEC

Havre De Grace Quarry

Vulcan Materials Company, Harford
Crushed, Broken Traprock

North East Quarry

Martin Marietta Materials Inc, Cecil
Crushed, Broken Granite

Rockville Crushed Stone

LafargeHolcim Ltd, Montgomery
Crushed, Broken Granite

S W Barrick & Sons

Aggregate Management, Inc, Frederick
Crushed, Broken Limestone NEC

Savage Stone

Aggregate Management, Inc, Howard
Crushed, Broken Granite

Texas Quarry

Martin Marietta Materials Inc, Baltimore
Crushed, Broken Limestone NEC

MASSACHUSETTS

Acushnet Quarry

CRH PLC, Bristol
Crushed, Broken Granite

Dracut MA Plant

Brox Industries Inc, Middlesex
Crushed, Broken Granite

Keating Quarry and Mill

CRH PLC, Worcester
Crushed, Broken Traprock

North Wilmington Quarry

Charles Benevento, Middlesex
Crushed, Broken Stone NEC

Otter River Pit & Plant

John L Fletcher, Worcester
Construction Sand and Gravel

Swampscott Quarry

LafargeHolcim Ltd, Essex
Crushed, Broken Traprock

West Roxbury Crushed Stone

S M Lorusso & Sons Inc, Suffolk
Crushed, Broken Stone NEC

Westfield Quarry Plant 78

Peckham Industries Inc, Hampden
Crushed, Broken Traprock

Wrentham Quarry

LafargeHolcim Ltd, Norfolk
Crushed, Broken Traprock

Wrentham Quarry

S M Lorusso & Sons Inc, Norfolk
Crushed, Broken Stone NEC

MICHIGAN

Carmeuse, Port Inland Operation

Carmeuse Holding SA, Schoolcraft
Crushed, Broken Limestone NEC

Drummond Dolomite, Inc.

Carmeuse Holding SA, Chippewa
Crushed, Broken Limestone NEC

Newport

CRH PLC, Monroe
Construction Sand and Gravel

O-N Minerals - Calcite Operation

Carmeuse Holding SA, Presque Isle
Crushed, Broken Limestone NEC

O-N Minerals, Cedarville Operation

Carmeuse Holding SA, Mackinac
Crushed, Broken Limestone NEC

Ottawa Lake Quarry

CRH PLC, Monroe
Crushed, Broken Limestone NEC

Presque Isle Aggregates

LafargeHolcim Ltd, Presque Isle
Crushed, Broken Limestone NEC

Ray Road Plant

Edward C Levy Jr, Oakland
Construction Sand and Gravel

Sylvania Minerals

Great Lakes Aggregates LLC, Monroe
Crushed, Broken Limestone NEC

Wilson Pit

Chris Peyer; James Jacob, Sanilac
Construction Sand and Gravel

MINNESOTA

Elk River Plant

LafargeHolcim Ltd, Sherburne
Construction Sand and Gravel

Empire Plant

LafargeHolcim Ltd, Dakota
Construction Sand and Gravel

KMM Burnsville Quarry

Thomas D Kraemer; Scott Peterson,
Dakota

Crushed, Broken Limestone NEC

Nelson Plant

LafargeHolcim Ltd, Washington
Construction Sand and Gravel

Ortonville Quarry

L G Everist Inc, Lac qui Parle
Crushed, Broken Granite

Ottawa Plant

Covia Holdings LLC, Nicollet
Crushed, Broken Sandstone

Savage Plant

T C Mineral (aka Twin City Mineral), Scott
Crushed, Broken Limestone NEC

St. Cloud Quarry

Martin Marietta Materials Inc, Stearns
Crushed, Broken Granite

UMore Park Mining Operation

Cemstone Concrete Solutions;
Ames Construction Inc, Dakota
Construction Sand and Gravel

Yellow Medicine Quarry

Martin Marietta Materials Inc,
Yellow Medicine
Crushed, Broken Granite

MISSISSIPPI

Bailey

Blain Sand & Gravel Inc, Copiah
Construction Sand and Gravel

Conagg Pit

Consolidated Aggregates, LLC, Pearl
River

Construction Sand and Gravel

Desoto

Memphis Stone & Gravel Company,
DeSoto

Construction Sand and Gravel

Hammett Gravel Co. Inc-Zeiglerville
Hammett Gravel Co. Inc, Holmes
Construction Sand and Gravel
Harmony Mine & Mill
Green Brothers Gravel Company, Inc.,
Copiah
Construction Sand and Gravel
Nichols Pit
Standard Construction Company Inc,
Marshall
Construction Sand and Gravel
Perry
Memphis Stone & Gravel Company, Tate
Construction Sand and Gravel
Sand Processing Plant
Michel B Moreno, Pearl River
Sand, Common
Scooter Mine
Amy Sojourner Eversole, Copiah
Sand, Common
Tremont
APAC-MS INC, Itawamba
Construction Sand and Gravel

MISSOURI

Brickeys Quarry
CRH PLC Ste. Genevieve
Crushed, Broken Limestone NEC
Gads Hill Plant
Saint-Gobain, Wayne
Crushed, Broken Granite
Iron Mt Trap Rock Co
Fred Weber, Inc., St. Francois
Crushed, Broken Traprock
Jefferson Barracks
Bussen Quarries Inc; Riverstone Group
St. Louis
Crushed, Broken Limestone NEC
New Melle
Fred Weber, Inc., St. Charles
Crushed, Broken Limestone NEC
North Stone
Fred Weber, Inc., St. Louis
Crushed, Broken Limestone NEC
Randolph Deep Mine
Martin Marietta Materials Inc, Clay
Crushed, Broken Limestone NEC
Stamper Underground
Martin Marietta Materials Inc, Platte
Crushed, Broken Limestone NEC
Tower Rock St Co St Genevieve Fa
Jay E Luhr; Michael Luhr, Ste.
Genevieve

Crushed, Broken Limestone NEC
Trap Rock and Granite Quarries, LLC
Frank J Beelman III, Iron
Crushed, Broken Granite

MONTANA

Belgrade Pit
MDU Resources Group Inc, Gallatin
Construction Sand and Gravel
DMC Mine
Cheryl L Thomas; Mark D Thomas,
Missoula
Construction Sand and Gravel
Fisher Industries Plant 15
Thomas G Fisher, Yellowstone
Construction Sand and Gravel
Jones Quarry
BOBH, LLC, Wheatland
Sand, Common
JTL Portable Crusher #3
MDU Resources Group Inc, Yellowstone
Construction Sand and Gravel
Portable Crusher
Robert B McIntyre, Cascade
Construction Sand and Gravel
Portable Crusher #1
Douglas Rehbein, Lake
Construction Sand and Gravel
Riverside Contracting Inc
Dwayne K Rehbein, Missoula
Construction Sand and Gravel
Warren Quarry
Basin Electric Power Cooperative,
Carbon
Crushed, Broken Limestone NEC
Welles 1
Alfred Hokanson, Madison
Construction Sand and Gravel

NEVADA

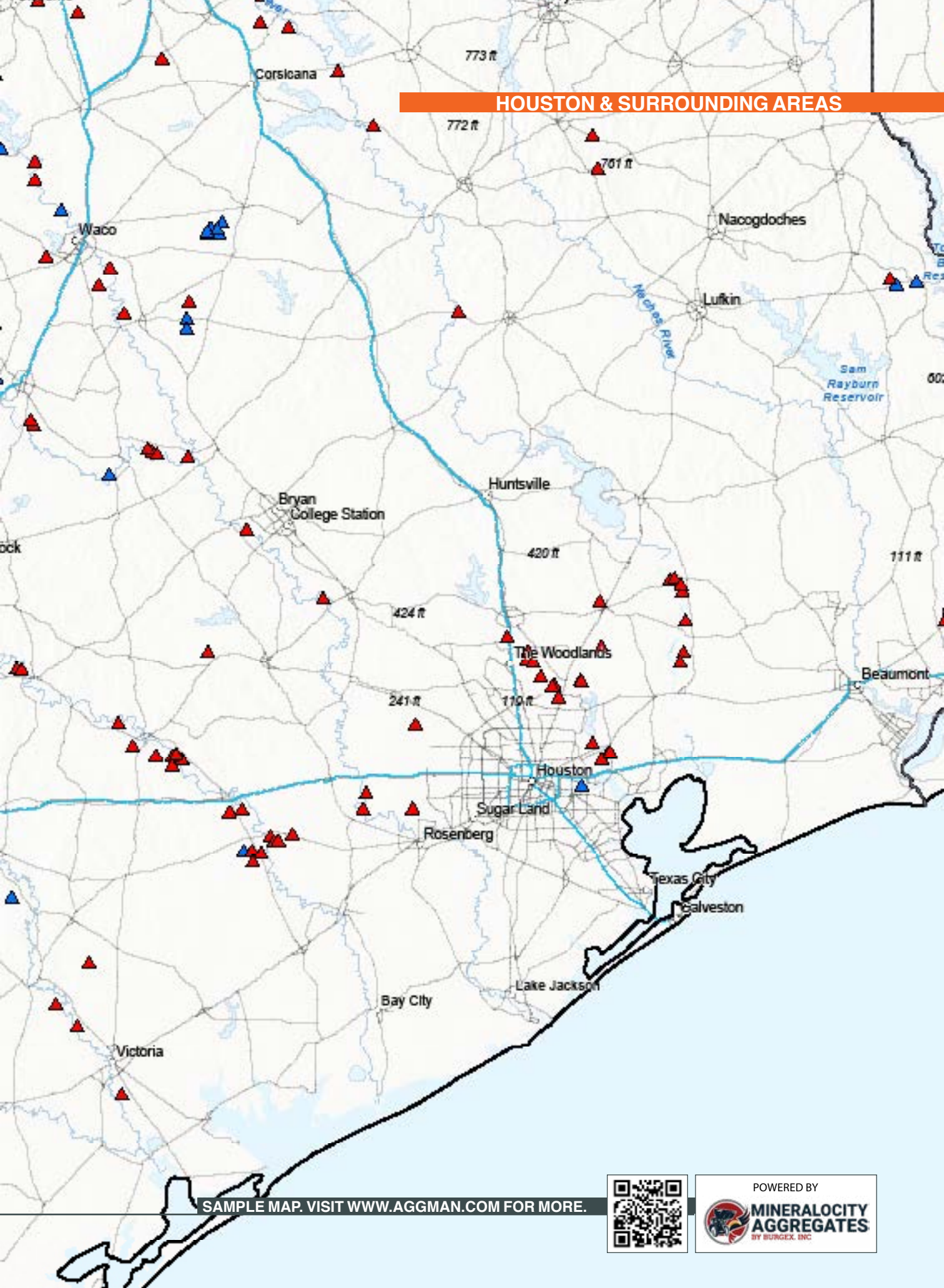
Apex Landfill
Jay Smith, Clark
Crushed, Broken Stone NEC
Bing Materials
Bing Construction Company, Douglas
Construction Sand and Gravel
Blue Diamond Crusher
Jay Smith, Clark
Construction Sand and Gravel
Boulder Ranch Quarry
Bill Wadley, Clark
Construction Sand and Gravel
Lockwood Quarry
Granite Construction Inc, Storey

Crushed, Broken Stone
Lone Mountain Pit
Mitsubishi Corp, Clark
Crushed, Broken Stone
Mustang Quarry
Christopher Dianda; Michael Dianda,
Washoe
Crushed, Broken Stone
Simplot Mill & Pit #1
Scott Simplot, Clark
Crushed, Broken Sandstone
Sloan Quarry #1001
LafargeHolcim Ltd, Clark
Crushed, Broken Stone
Spanish Springs Pit #6
Martin Marietta Materials Inc, Washoe
Crushed, Broken Stone

NEW ENGLAND

Backus Sand & Gravel
Alice Jean Backhaus, Pierce
Construction Sand and Gravel
DuBois Quarry
Martin Marietta Materials Inc, Pawnee
Crushed, Broken Limestone NEC
Fort Calhoun Underground Mine
Martin Marietta Materials Inc,
Washington
Crushed, Broken Limestone NEC
Kerford Limestone Company
Constructors Inc (NE), Cass
Crushed, Broken Limestone NEC
North Valley Sand
Martin Marietta Materials Inc, Douglas
Construction Sand and Gravel
Pilger Sand & Gravel
Scott A Willers; Sara K P Willers,
Stanton
Construction Sand and Gravel
Sand Creek Pit & Plant
Nebco Inc, Saunders
Construction Sand and Gravel
Seitz Quarry
Nebco Inc, Gage
Crushed, Broken Limestone NEC
Weeping Water Mine
Martin Marietta Materials Inc, Cass
Crushed, Broken Limestone NEC
West Center Sand
Martin Marietta Materials Inc, Douglas
Construction Sand and Gravel

HOUSTON & SURROUNDING AREAS



SAMPLE MAP. VISIT WWW.AGGMAN.COM FOR MORE.



NEW HAMPSHIRE

Concord Sand & Gravel
Richard Charbonneau; Mark Charbonneau
Merrimack
Construction Sand and Gravel
Hooksett Crushed Stone C607
CRH PLC, Merrimack
Crushed, Broken Stone NEC
Hudson NH Plant
Brox Industries Inc, Hillsborough
Crushed, Broken Traprock
Lebanon Crushed Stone C623
CRH PLC, Grafton
Crushed, Broken Granite
Litchfield Sand & Gravel
Richard Charbonneau; Mark Charbonneau
Hillsborough
Crushed, Broken Granite
Loudon Quarry
Charles Benevento, Merrimack
Construction Sand and Gravel
Madison Pit And Mill
Calvin J Coleman, Carroll
Construction Sand and Gravel
Ossipee Aggregates
Boston Sand & Gravel Company, Carroll
Construction Sand and Gravel
Torroneo Pit & Plant
Henry Torroneo, Rockingham
Crushed, Broken Granite
West Road Pit
Richard Charbonneau; Mark Charbonneau
Rockingham
Crushed, Broken Stone NEC

NEW JERSEY

Belle Mead Quarry
John L Silvi; Laurence J Silvi II, Somerset
Crushed, Broken Traprock
Braen Stone of Sparta
Janet R Braen, Sussex
Crushed, Broken Limestone NEC
Fanwood Mine and Mill
Robert Weldon; William H Weldon,
Somerset
Crushed, Broken Traprock
Hamburg Division
US Concrete, Sussex
Crushed, Broken Stone NEC
Kingston Quarry
Trap Rock Industries Inc; CRH PLC
Somerset
Crushed, Broken Granite

Lake Hopatcong Quarry
Richard Weldon; William Weldon, Sussex
Crushed, Broken Traprock
Moore's Station Quarry
Trap Rock Industries Inc; CRH PLC,
Mercer
Crushed, Broken Traprock
Mount Hope Quarry
CRH PLC, Morris
Crushed, Broken Granite
Pompton Lakes Quarry
CRH PLC, Passaic
Crushed, Broken Traprock
Stavola Construction Materials, Inc.
Joseph Stavola III; Richard J Stavola,
Somerset
Crushed, Broken Traprock

NEW MEXICO

Boyd Pit
GMS Inc; David Shoup, Eddy
Construction Sand and Gravel
CR #1
Walter L Meech, Cibola
Crushed, Broken Limestone NEC
Fort Sumner Pit
Winston C Griego; Nick Griego Jr,
De Baca
Crushed, Broken Limestone NEC
Lowdermilk
RPC & SAC Revocable Trust; TEMC VS
Trust
Rio Arriba
Construction Sand and Gravel
Mountain States Crusher GCP 3164
David Otoski; Karen Pace, Valencia
Crushed, Broken Stone NEC
Placitas
Vulcan Materials Company, Sandoval
Construction Sand and Gravel
Plant #7
Brian T Etchison; Ralph E Janes IV, Curry
Construction Sand and Gravel
R. S. I. Pit
Alonzo Ramirez Jr, Lea
Crushed, Broken Limestone NEC
Torrance Quarry
Vulcan Materials Company, Torrance
Crushed, Broken Stone NEC
Vado Quarry
Stanley P Jobe; Irene Epperson, Doña
Ana
Construction Sand and Gravel

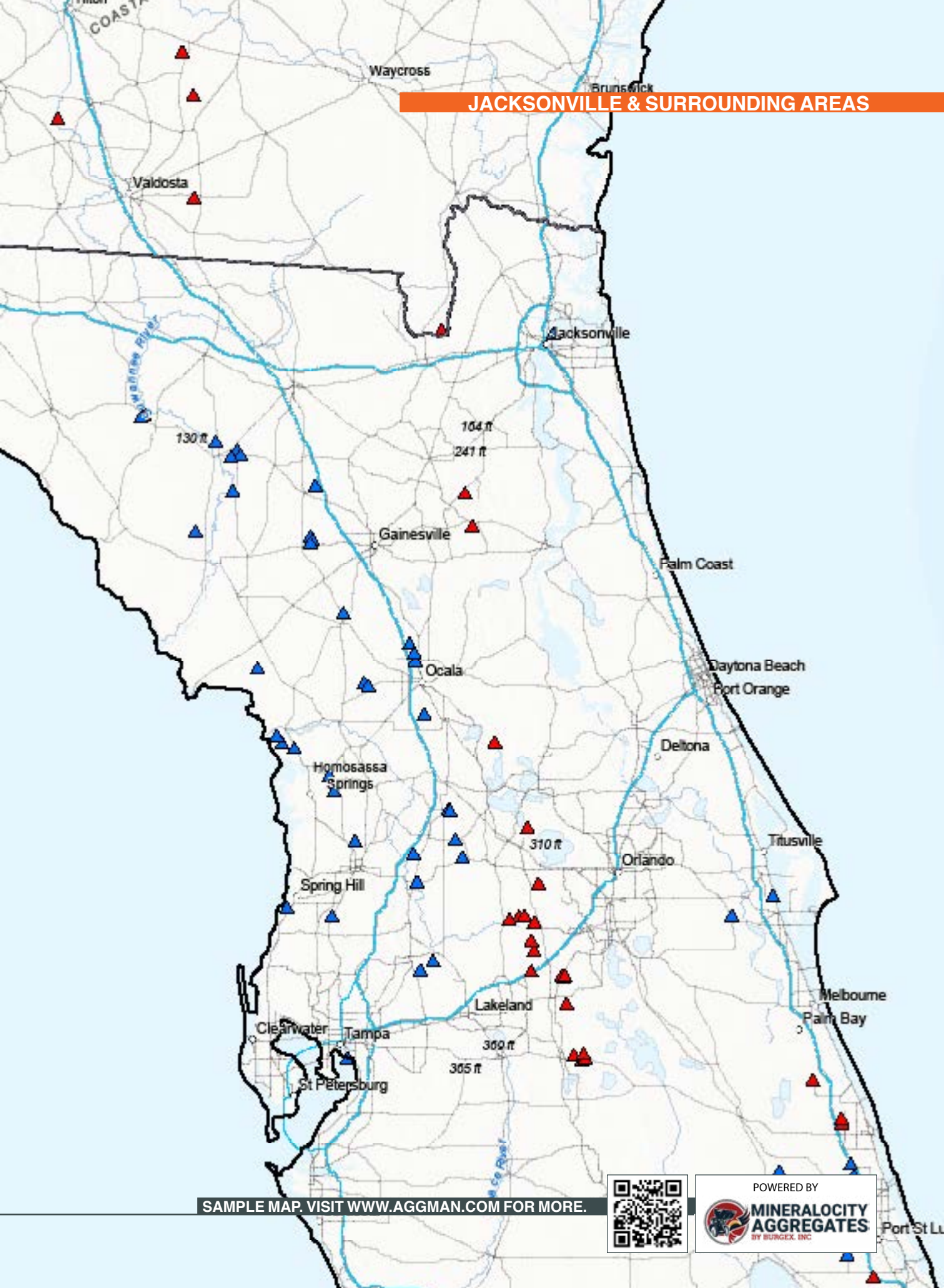
NEW YORK

Clinton Point Quarry & Mill
CRH PLC, Dutchess
Crushed, Broken Traprock
Collins
Dan Gernatt Jr, Erie
Construction Sand and Gravel
County Line Stone Co Inc
Michael Buyers; Bradley Buyers, Erie
Crushed, Broken Limestone NEC
Fishkill Quarry
Glenn Pacchiana, Dutchess
Crushed, Broken Limestone NEC
Haverstraw Quarry & Mill
CRH PLC, Rockland
Crushed, Broken Granite
Honeoye Falls Plant
HeidelbergCement AG, Livingston
Crushed, Broken Limestone NEC
Howes Cave
Emil J Galasso, Schoharie
Crushed, Broken Sandstone
Jamesville Plant
HeidelbergCement AG, Onondaga
Crushed, Broken Limestone NEC
Wehrle Quarry
New Enterprise Stone & Lime Company
Inc
Erie
Crushed, Broken Limestone NEC
West Nyack Quarry
CRH PLC, Rockland
Crushed, Broken Traprock

NORTH CAROLINA

3M Pittsboro
Minnesota Mining & Manufacturing Co.,
Chatham
Crushed, Broken Granite
Arrowood
Martin Marietta Materials, Inc.,
Mecklenburg
Crushed, Broken Granite
Butner Quarry
Carolina Sunrock LLC, Granville
Crushed, Broken Granite
Charlotte Quarry
Martin Marietta Materials, Inc.,
Mecklenburg
Crushed, Broken Granite
Grove Stone Quarry
BV Hedrick Gravel & Sand Co, Buncombe

JACKSONVILLE & SURROUNDING AREAS



SAMPLE MAP, VISIT WWW.AGGMAN.COM FOR MORE.



POWERED BY
MINERALCITY AGGREGATES
BY BURGEX, INC.

Port St Lu

Crushed, Broken Granite
 Knightdale Quarry
 Wake Stone Corp, Wake
 Crushed, Broken Granite
 Lake Norman Quarry
 BV Hedrick Gravel & Sand Co, Lincoln
 Crushed, Broken Granite
 Pittsboro Plant
 Luck Stone Corp-Pittsboro Plant,
 Chatham
 Crushed, Broken Granite
 Rockingham Quarry
 Vulcan Construction Materials, LLC,
 Richmond
 Crushed, Broken Granite
 Triangle Quarry
 Wake Stone Corp, Wake
 Crushed, Broken Granite

NORTH DAKOTA

Dobias Pit #1
 Andy Brown, McKenzie
 Construction Sand and Gravel
 Eaton Ranch
 Isom Brothers Holdings LLC; Young Brothers
 LLC
 McHenry
 Sand, Common
 Fisher Industries Plant 10
 Thomas G Fisher, McKenzie
 Construction Sand and Gravel
 Fisher Industries Plant 13
 Thomas G Fisher, Mountrail
 Construction Sand and Gravel
 Fisher Industries Plant 26
 Thomas G Fisher, Stark
 Construction Sand and Gravel
 Fisher Industries Plant 43
 Thomas G Fisher, Ward
 Construction Sand and Gravel
 Fisher Industries Plant 9
 Thomas G Fisher, Ward
 Construction Sand and Gravel
 Mckenzie Wash Plant
 McCormick Inc, Burleigh
 Construction Sand and Gravel
 Portable Plant #2
 James R Bradshaw, Grand Forks
 Construction Sand and Gravel
 Sheyenne Pit
 Milton R Gowan, Eddy
 Construction Sand and Gravel

OHIO

Batavia Mine
 Arch Materials LLC, Clermont
 Crushed, Broken Limestone NEC
 Carey Plant
 National Lime & Stone Company,
 Wyandot
 Crushed, Broken Limestone NEC
 Columbus Limestone
 Shelly Materials Inc, Franklin
 Crushed, Broken Limestone NEC
 Columbus Plant
 The Olen Corporation, Franklin
 Crushed, Broken Limestone NEC
 Columbus Region Plant
 National Lime & Stone Company,
 Delaware
 Crushed, Broken Limestone NEC
 Eagle Crushed Stone
 Hanson Aggregates Davon, LLC, Brown
 Crushed, Broken Limestone NEC
 Marblehead Aggregates
 Redland Quarries NY Inc, Ottawa
 Crushed, Broken Limestone NEC
 MGQ Inc
 MGQ Inc, Seneca
 Crushed, Broken Limestone NEC
 Sandusky Quarry
 Hanson Aggregates Midwest, LLC, Erie
 Crushed, Broken Limestone NEC
 Subtropolis
 Subtropolis Mining Co., Mahoning
 Crushed, Broken Limestone NEC

OKLAHOMA

Anchor Stone Company-Tulsa Rock
 #2
 Joseph L Parker Jr, Rogers
 Crushed, Broken Limestone NEC
 Davis Rock Quarry
 Dolese Brothers Company, Murray
 Crushed, Broken Limestone NEC
 East Quarry
 CRH PLC, Tulsa
 Crushed, Broken Limestone NEC
 Mill Creek
 Martin Marietta Materials Inc, Johnston
 Crushed, Broken Granite
 North Troy
 Vulcan Materials Company, Johnston
 Crushed, Broken Stone NEC
 Pryor Stone #2
 James A Kemp; Melinda S Kemp, Mayes

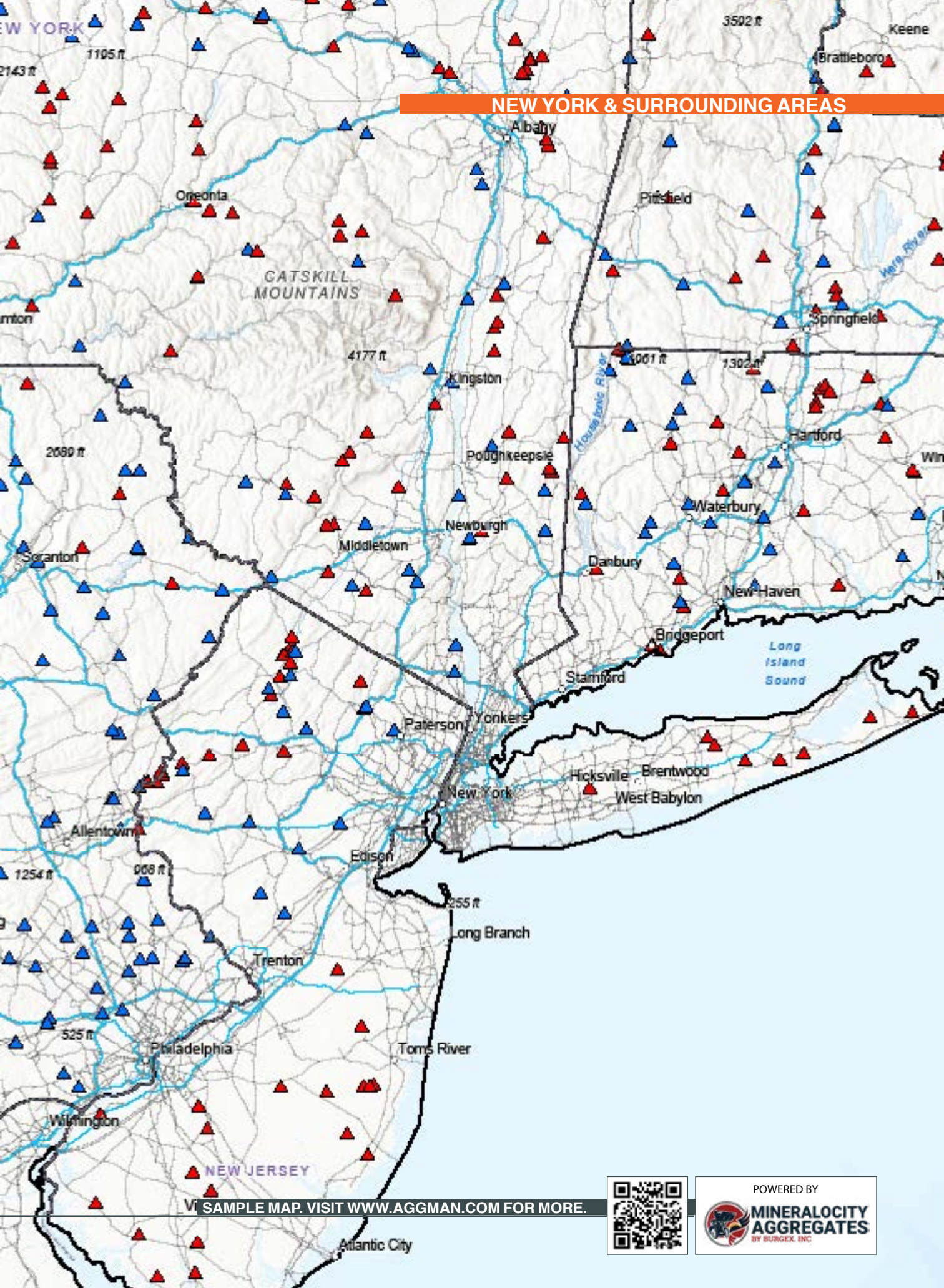
Crushed, Broken Limestone NEC
 Richards Spur Rock Quarry
 Dolese Brothers Company, Comanche
 Crushed, Broken Limestone NEC
 Sawyer Quarry
 Summit Materials LLC, Choctaw
 Crushed, Broken Stone NEC
 Stringtown Quarry
 LafargeHolcim Ltd, Atoka
 Crushed, Broken Limestone NEC
 TXI Mill Creek Quarry
 Martin Marietta Materials Inc, Johnston
 Crushed, Broken Limestone NEC

OREGON

104 Portable
 A J Urbanek, Washington
 Crushed, Broken Stone NEC
 Delta Pit And Plant
 Paula J Babb, Lane
 Construction Sand and Gravel
 Egge Quarry
 Vernon L Egge, Lane
 Crushed, Broken Stone NEC
 Farmington Pit
 Gary T Baker, Washington
 Crushed, Broken Traprock
 Reed Pit
 MDU Resources Group Inc, Marion
 Construction Sand and Gravel
 Rivergate Plant
 CRH PLC, Multnomah
 Crushed, Broken Limestone NEC
 Santosh DBA CalPortland
 Taiheiyō Cement Corp, Columbia
 Construction Sand and Gravel
 Waterview
 MDU Resources Group Inc, Columbia
 Construction Sand and Gravel
 Wildish Sand & Gravel Co Plant #2
 Wildish Land Company, Lane
 Construction Sand and Gravel
 Windsor Rock Products
 CRH PLC, Marion
 Crushed, Broken Stone NEC

PENNSYLVANIA

Coolspring Mining Inc
 Patricia Snoddy, Fayette
 Crushed, Broken Limestone NEC



NEW YORK & SURROUNDING AREAS

VIEW SAMPLE MAP. VISIT WWW.AGGMAN.COM FOR MORE.



POWERED BY

MINERALCITY AGGREGATES
BY BURGEX, INC.

Glen Mills
HeidelbergCement AG, Delaware
Crushed, Broken Traprock and Asphalt

Hanover Quarry
Vulcan Materials Company, Adams
Crushed, Broken Limestone NEC

Kinsley PenRoc
Robert A Kinsley, York
Crushed, Broken Limestone NEC

Lake Lynn Quarry
Sun Capital Partners Inc, Fayette
Crushed, Broken Limestone NEC

Martin Stone Quarries Inc
Glenn Martin; Thomas Martin, Berks
Crushed, Broken Sandstone and Gneiss

Pleasant Gap Aggregate Plant #2
Daniel R Hawbaker, Centre
Crushed, Broken Limestone NEC

Princeton
Snyder Associated Companies Inc,
Lawrence
Crushed, Broken Limestone NEC

Rohrers Quarry, Inc.
Wilbur G Rohrer, Lancaster
Crushed, Broken Limestone NEC

Thomasville Mine
CRH PLC, York
Crushed, Broken Limestone NEC and Lime

RHODE ISLAND

Charlestown Farms LLC
Thomas Miozzi, Washington
Construction Sand and Gravel

Cranston Quarry
CRH PLC, Providence
Crushed, Broken Stone NEC

Cumberland Quarry Corp.
Thomas Walsh, Providence
Crushed, Broken Traprock

Hopkins Hill Sand & Stone
Stephen A Cardii, Kent
Construction Sand and Gravel

Material Sand & Stone Corp
Robert A Pezza; Michael T Pezza,
Providence
Construction Sand and Gravel

Plant 7
O & G Industries Inc, Washington
Crushed, Broken Granite

Pound Hill Quarry
Robert A Pezza; Michael T Pezza,
Providence
Construction Sand and Gravel

Richmond Sand & Stone
David D'Ambra, Washington
Construction Sand and Gravel

Slatersville Plant
Paul Philip Baillargeon; Carmine Iacune
Providence
Construction Sand and Gravel

South County Sand & Gravel
Roland J Fiore, Washington
Construction Sand and Gravel

SOUTH CAROLINA

Cayce Quarry
Martin Marietta Materials, Inc., Lexington
Crushed, Broken Granite

Columbia Quarry
Vulcan Construction Materials, LLC,
Richland
Crushed, Broken Granite

Dreyfus Quarry
Vulcan Construction Materials, LLC,
Richland
Crushed, Broken Granite

Jefferson Quarry
Hanson Aggregates Southeast, LLC,
Chesterfield
Crushed, Broken Granite

Lakeside Quarry
Vulcan Construction Materials, LLC,
Greenville
Crushed, Broken Granite

North Columbia Quarry
Martin Marietta Materials, Inc., Richland
Crushed, Broken Granite

North Myrtle Beach Quarry
Wake Stone Corporation, Horry
Crushed, Broken Stone NEC

Pacolet Quarry
Vulcan Construction Materials, LLC,
Spartanburg
Crushed, Broken Granite

Piedmont Sand
Piedmont Sand Co, Chesterfield
Construction Sand and Gravel

Sandy Flat Quarry
Hanson Aggregates Southeast, LLC,
Greenville
Crushed, Broken Granite

SOUTH DAKOTA

Brookings Sand & Gravel
L G Everist Inc, Brookings
Construction Sand and Gravel

Corson Sand Plant
MDU Resources Group Inc, Minnehaha
Construction Sand and Gravel

Dell Rapids East Quarry
L G Everist Inc, Minnehaha
Crushed, Broken Sandstone

Dell Rapids West Quarry
L G Everist Inc, Minnehaha
Construction Sand and Gravel

East Sioux Quarry
L G Everist Inc, Minnehaha
Construction Sand and Gravel

Portable #110
Tom E Lien Jr, Pennington
Construction Sand and Gravel

Rapid City Quarry
Colas S A, Pennington
Crushed, Broken Limestone NEC

Sioux Falls Quarry
MDU Resources Group Inc, Minnehaha
Crushed, Broken Quartzite

Spencer Quarries Inc.
Richard C Sweetman, Hanson
Crushed, Broken Sandstone

Summit Sand & Gravel
L G Everist Inc, Roberts
Construction Sand and Gravel

TENNESSEE

Benton County Quarry
Vulcan Construction Materials, LLC,
Benton
Crushed, Broken Limestone NEC

Chattanooga Quarry
Vulcan Construction Materials, LLC,
Hamilton
Crushed, Broken Limestone NEC

Clarksville Quarry
Vulcan Construction Materials, LLC,
Montgomery
Crushed, Broken Limestone NEC

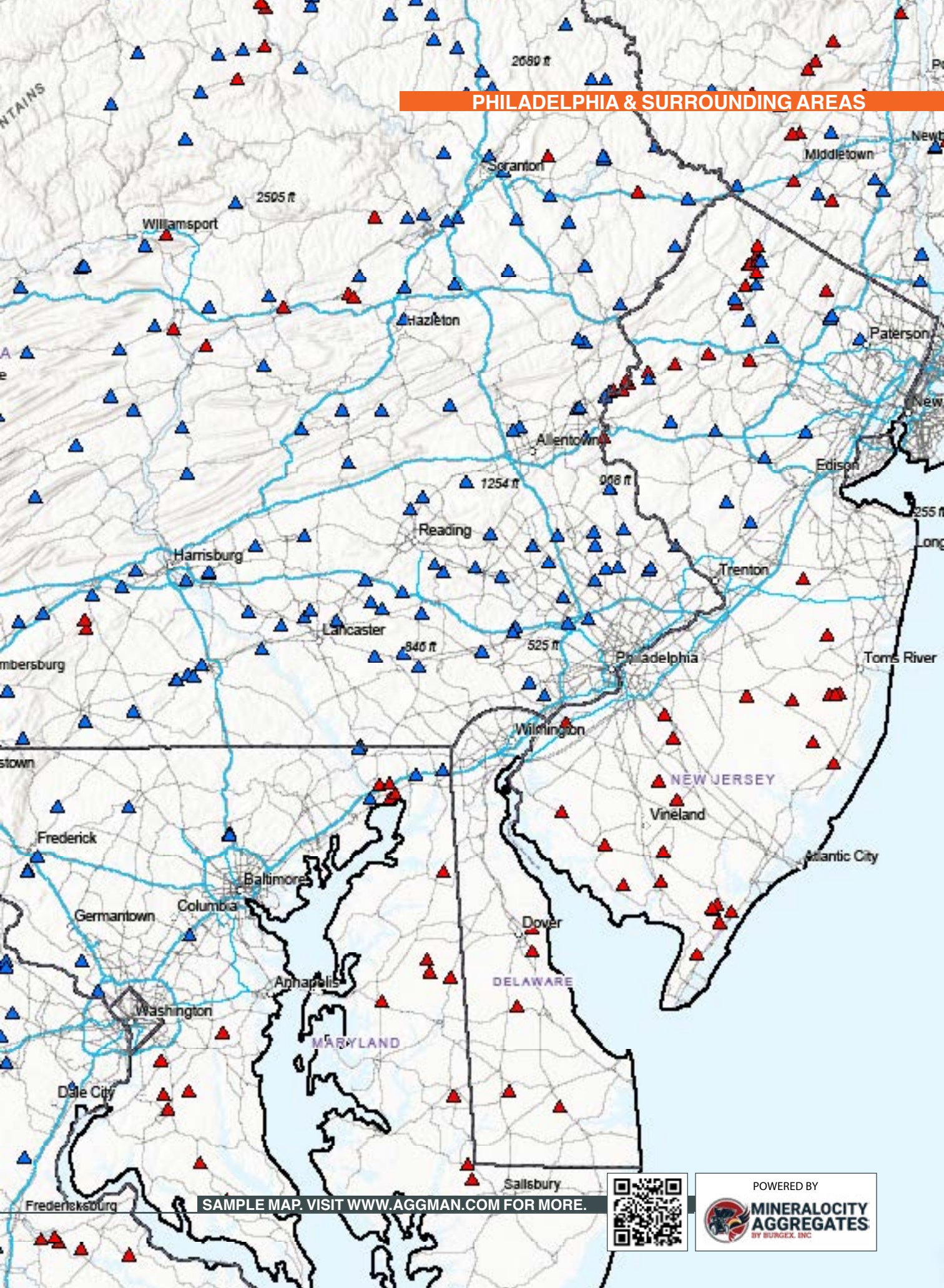
Danley Quarry
Vulcan Construction Materials, LLC,
Davidson
Crushed, Broken Limestone NEC

Dixie Lee Quarry
Vulcan Construction Materials, LLC, Knox
Crushed, Broken Limestone NEC

Franklin Quarry
Vulcan Construction Materials, LLC,
Williamson
Crushed, Broken Limestone NEC

Gallatin Quarry
Reostone LLC, Sumner
Manufactured Sand and Gravel

PHILADELPHIA & SURROUNDING AREAS

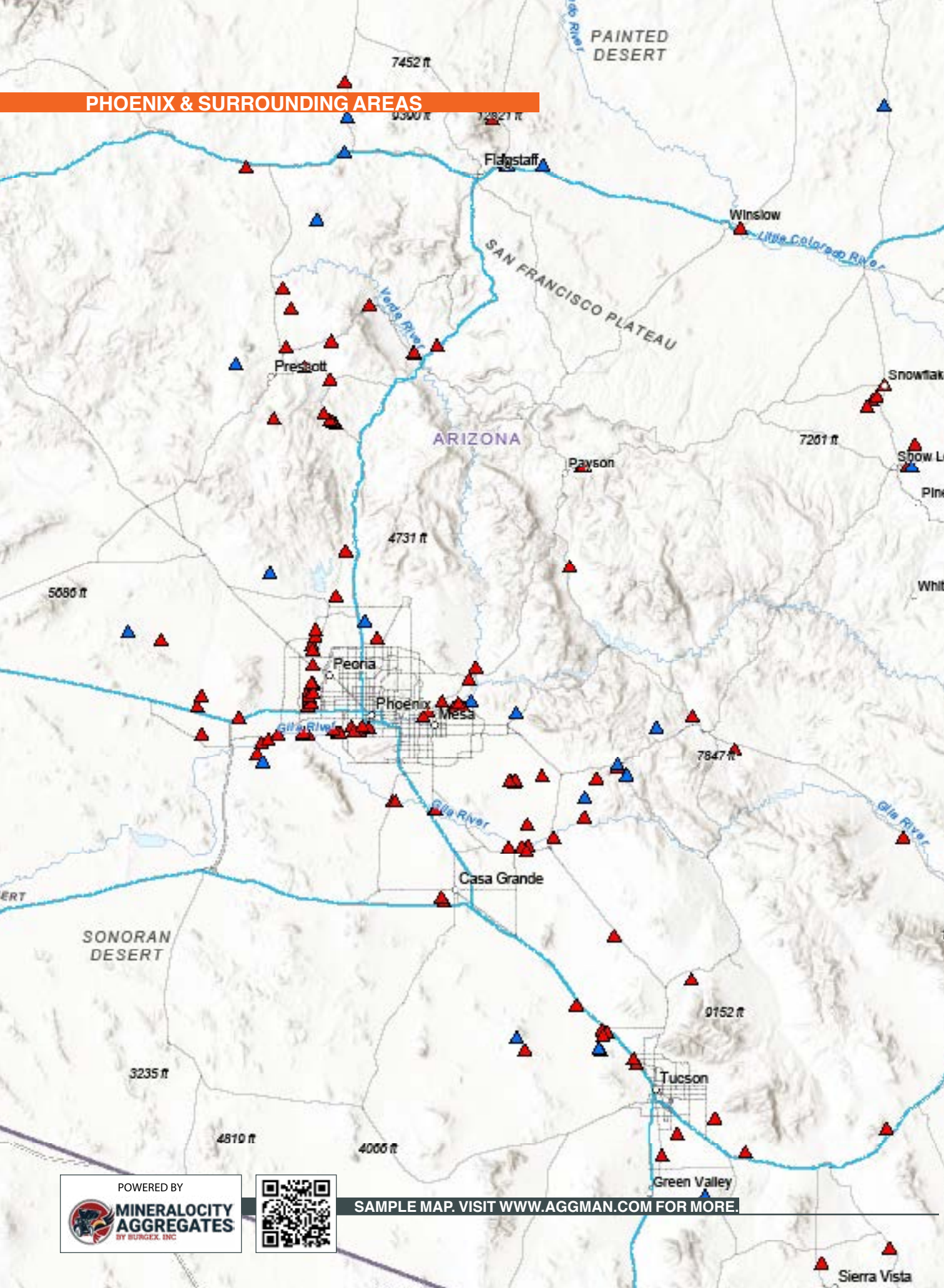


SAMPLE MAP. VISIT WWW.AGGMAN.COM FOR MORE.



POWERED BY
 **MINERALCITY
AGGREGATES**
BY BURGEX, INC.

PHOENIX & SURROUNDING AREAS



POWERED BY
 **MINERALCITY
AGGREGATES**
BY BUNGEX, INC.



SAMPLE MAP. VISIT WWW.AGGMAN.COM FOR MORE.

Pit #1 & Plant

Newport Sand & Gravel, Cocke
Construction Sand and Gravel

Rutherford Quarry

Rogers Group Inc, Rutherford
Crushed, Broken Limestone NEC

Winn Materials LLC

Winn Materials LLC Montgomery
Crushed, Broken Limestone NEC

TEXAS

Balcones Quarry

Cemex S A, Comal
Crushed, Broken Limestone NEC

Beckmann Quarry

Martin Marietta Materials Inc, Bexar
Crushed, Broken Limestone NEC

Bridgeport Plant

HeidelbergCement AG, Wise
Crushed, Broken Limestone NEC

Bridgeport Stone Plant

Martin Marietta Materials Inc, Wise
Crushed, Broken Limestone NEC

Briggs Plant

Robert W Briggs, Victoria
Construction Sand and Gravel

Chico Quarry

Martin Marietta Materials Inc, Wise
Crushed, Broken Limestone NEC

Georgetown Qy & Plt

W B Snead, Williamson
Crushed, Broken Limestone NEC

Hunter Quarry

John R Weisman, Comal
Crushed, Broken Limestone NEC

Marble Falls Quarry

CRH PLC, Burnet
Crushed, Broken Limestone NEC

Servtex Plant

HeidelbergCement AG, Comal
Crushed, Broken Limestone NEC

UTAH

Beck Street

CRH PLC, Salt Lake
Construction Sand and Gravel

Hansen Pit

CCI (Clyde Companies Inc), Salt Lake
Construction Sand and Gravel

Lakeview Rock Products, Inc.

Todd A Hughes; Scott G Hughes, Salt
Lake

Construction Sand and Gravel

Lehi Point East

CRH PLC, Salt Lake

Construction Sand and Gravel

Mt Jordan Pit

CCI (Clyde Companies Inc), Salt Lake
Construction Sand and Gravel

Pelican Point

CCI (Clyde Companies Inc), Utah
Construction Sand and Gravel

South Pelican

Todd Cusick, Utah
Construction Sand and Gravel

South Weber Pit

CRH PLC, Davis
Construction Sand and Gravel

Talons Cove

John D Hadfield, Utah
Construction Sand and Gravel

Walker Sand & Gravel Pit

Granite Construction Inc, Salt Lake
Construction Sand and Gravel

VERMONT

Crushed Stone Quarry and Plant

Frank Whitcomb, Chittenden
Crushed, Broken Limestone NEC

Home Pit and Mill

Timothy Casey, Chittenden
Construction Sand and Gravel

Middlebury Quarry

Trampas Demers, Addison
Crushed, Broken Limestone NEC

New Haven Crushed Stone C600

CRH PLC, Addison
Crushed, Broken Limestone NEC

North East Materials Group LLC

Harry W Hart, Washington
Crushed, Broken Stone NEC

S.D. Ireland Williston Quarry

Scott D Ireland, Chittenden
Crushed, Broken Stone NEC

Shelburne Quarry

Trampas Demers, Chittenden
Crushed, Broken Limestone NEC

SLC Swanton Div.

Trampas Demers, Franklin
Crushed, Broken Limestone NEC

Waterford Crushed Stone C603

CRH PLC, Caledonia
Crushed, Broken Limestone NEC

White River Pit

Warren Ames III, Sullivan
Crushed, Broken Sandstone

VIRGINIA

Bull Run Plant

Luck Stone Corp-Bull Run, Loudoun
Crushed, Broken Granite

Chantilly Crushed Stone Incorporated

Chantilly Crushed Stone Inc, Loudoun
Crushed, Broken Traprock

Frederick Quarry

Stuart M Perry Inc, Frederick
Crushed, Broken Limestone NEC

Graham-Virginia

Vulcan Construction Materials, LLC,
Fairfax

Crushed, Broken Granite

Jack Plant

Vulcan Construction Materials, LLC,
Dinwiddie

Crushed, Broken Granite

Manassas

Vulcan Construction Materials, LLC
Prince William

Crushed, Broken Granite

Operational Support

Luck Stone Corp-Operational Support
Goochland

Crushed, Broken Granite

Sanders

Vulcan Construction Materials, LLC
Fauquier

Crushed, Broken Traprock

Skippers

Vulcan Construction Materials, LLC
Greensville

Crushed, Broken Granite

Swords Creek Plant

E Dillon & Company, Russell
Crushed, Broken Limestone NEC

WASHINGTON

Auburn Facility

CRH PLC, King
Construction Sand and Gravel

Breen Portable No.2

Sterling D Breen, Lewis
Construction Sand and Gravel

Cadman High Rock Quarry

HeidelbergCement AG, Snohomish
Crushed, Broken Traprock

Dupont Pit

Taiheiy Cement Corp, Pierce
Construction Sand and Gravel

Granite Falls Quarry
HeidelbergCement AG, Snohomish
Construction Sand and Gravel
Iron Mountain Quarry
James Burnett; Lawrence P. Hughes,
Snohomish
Crushed, Broken Traprock
Kapowsin Quarry
Harry W Hart, Pierce
Crushed, Broken Traprock
King Creek Pit
Harry W Hart, Pierce
Construction Sand and Gravel
Snoqualmie S&G dba
CalPortland Company
Taiheiyo Cement Corp, King
Construction Sand and Gravel
Tonasket Quarry
MacDonald Development Corporation
Okanogan
Crushed, Broken Limestone NEC

WEST VIRGINIA

Beckley Plant
Appalachian Aggregates, LLC, Raleigh
Crushed, Broken Sandstone
Burning Springs Mine
Martin Marietta Materials Inc, Wood
Crushed, Broken Limestone NEC
Decker's Creek Limestone Company
Decker's Creek Limestone Company,
Monongalia
Crushed, Broken Limestone NEC
Greer Limestone
Greer Limestone Company, Monongalia
Crushed, Broken Limestone NEC
Greystone Quarry And Plant
R B S Inc, Greenbrier
Crushed, Broken Limestone NEC
Hog Lick Quarry
Paragon Investors One LLC; Relique

Resources LLC
Marion
Crushed, Broken Limestone NEC
J F Allen Co Aggregates Quarry
J F Allen Company, Randolph
Crushed, Broken Limestone NEC
Lewisburg Plant
Appalachian Aggregates, LLC, Greenbrier
Crushed, Broken Limestone NEC
Mercer Stone Plant
Appalachian Aggregates LLC, Mercer
Crushed, Broken Limestone NEC
Millville Quarry
Aggregate Industries, Jefferson
Crushed, Broken Limestone NEC

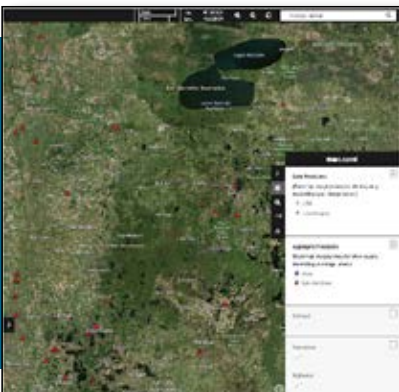
WISCONSIN

Dresser Trap Rock Incorporated
Ivan Bowen III; Ivan Maxwell Bowen IV,
Polk
Crushed, Broken Traprock
GLC Minerals LLC
Wesley Garner, Brown
Crushed, Broken Limestone NEC
Halquist Stone Company-Chilton
Quarry
Tom Halquist; Bill Halquist, Calumet
Crushed, Broken Limestone NEC
Highway 53
Jim McMahon; Brad Thompson,
Trempealeau
Sand, Common
Kremlin Plant
Specialty Granules Inc, Marinette
Crushed, Broken Traprock
PC2 Franklin Aggregates
Kurt Bechthold, Milwaukee
Crushed, Broken Limestone NEC
Sussex Quarry
James D Dawson, Waukesha
Crushed, Broken Limestone NEC

Waukesha Lime & Stone
Kurt Bechthold, Waukesha
Crushed, Broken Limestone NEC
West Quarry
James D Dawson, Waukesha
Crushed, Broken Limestone NEC
Wimme Pit
Patrick Wimme, Portage
Construction Sand and Gravel

WYOMING

2 M Pit
Michael W Cunningham, Fremont
Construction Sand and Gravel
Crusher #1
Colas S A, Laramie
Construction Sand and Gravel
Crusher #2
Philip Caines, Hot Springs
Construction Sand and Gravel
Evans No 1 Pit
CRH PLC, Teton
Construction Sand and Gravel
Granite Canyon Quarry
Martin Marietta Materials Inc, Laramie
Crushed, Broken Granite
Guernsey Quarry
Martin Marietta Materials Inc, Platte
Crushed, Broken Limestone NEC
Jonathon Quarry
Pete Lien & Sons Inc, Albany
Crushed, Broken Limestone NEC
Portable #1
D Michael Smith, Big Horn
Construction Sand and Gravel
Portable Crusher
Robert Mullinax, Johnson
Construction Sand and Gravel
Star Pit #1
MDU Resources Group Inc, Laramie
Construction Sand and Gravel



Visit www.aggman.com to experience the all new Aggregates Atlas!

Visit our completely new set of online tools and an intuitive interface that will re-define the way you use the Rock Products Aggregates Atlas.

